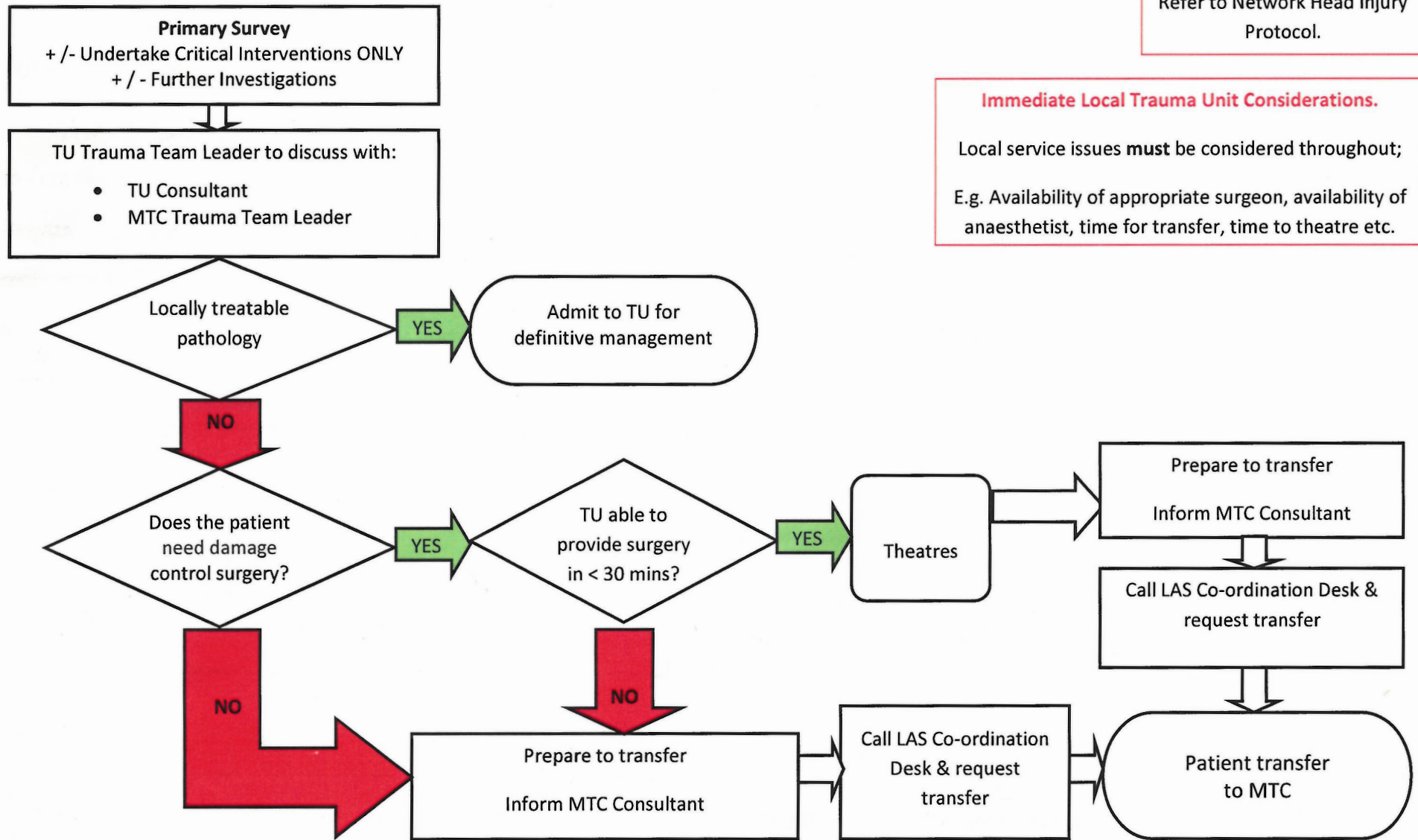


# Pan London Protocol for Secondary Transfer

London Trauma Office



**EXCEPTIONS:**  
Isolated Head Injuries  
↓  
Refer to Network Head injury Protocol.

**Immediate Local Trauma Unit Considerations.**  
Local service issues **must** be considered throughout;  
E.g. Availability of appropriate surgeon, availability of anaesthetist, time for transfer, time to theatre etc.