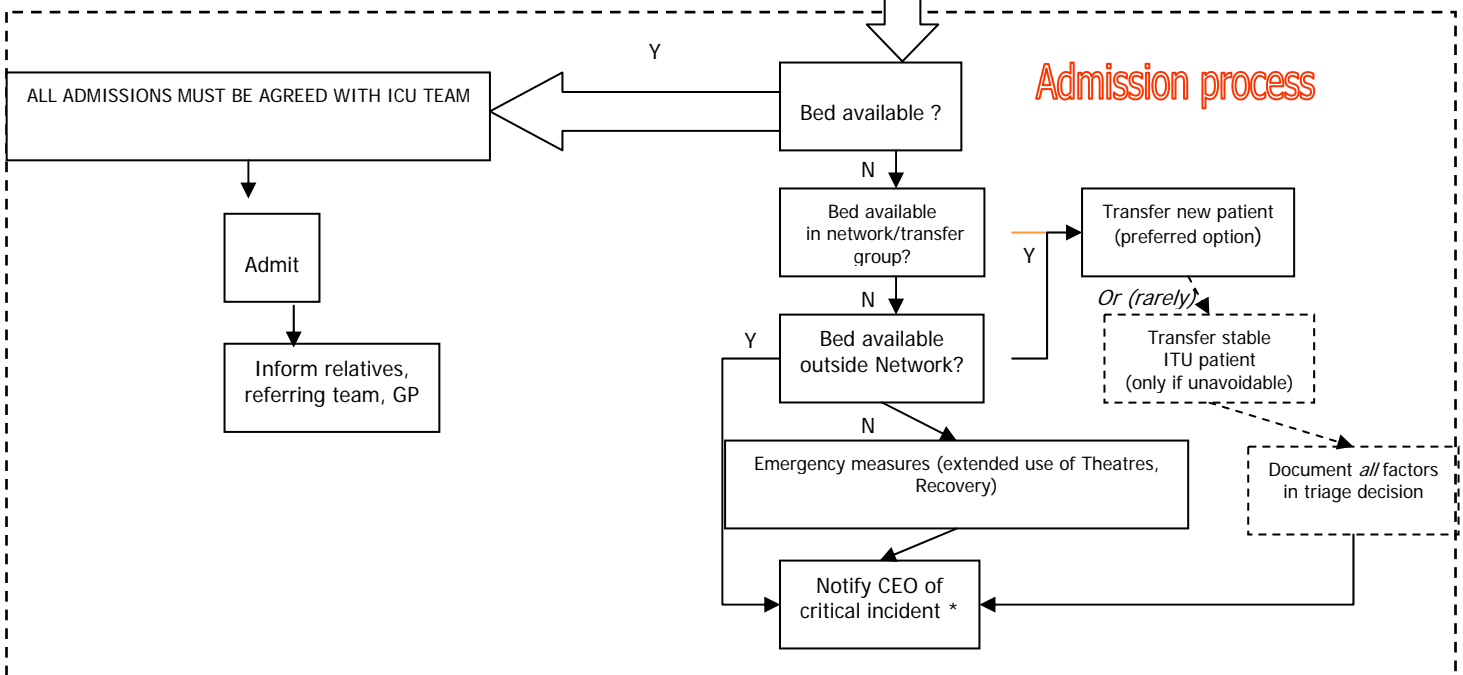
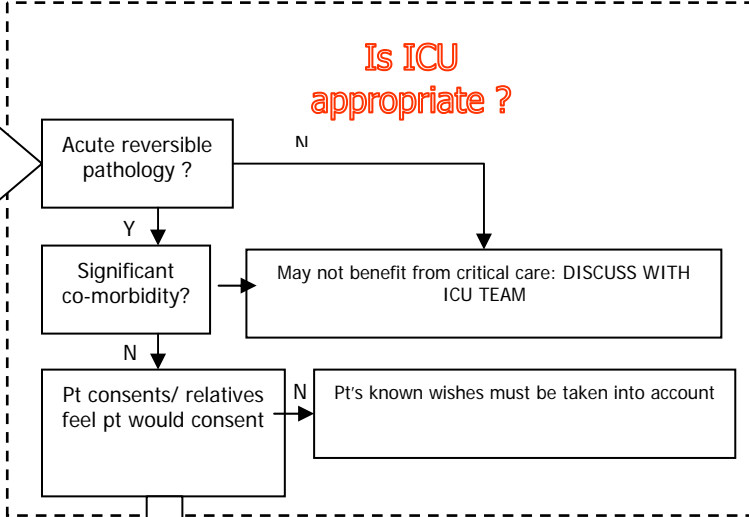
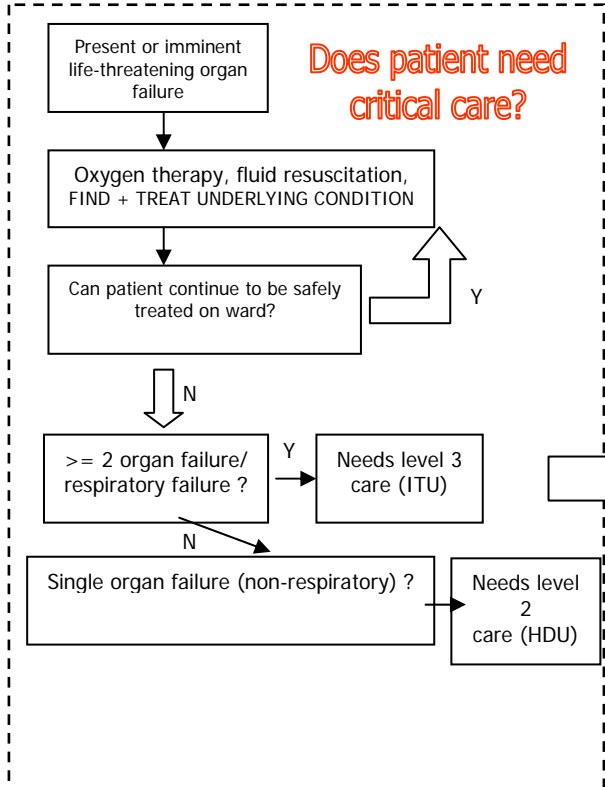


### Network Admissions Flowchart for Adult Critical Care Services

<b>Policy author</b>	NWLCC Network Clinical Lead
<b>Version</b>	September 2019
<b>Date ratified</b>	Changes from 2018 - none Changes from 2017 - none
<b>Ratifying Body</b>	Network Joint Clinical Forum Board
<b>Review date</b>	September 2020



**\* Critical incidents:** Notify CEO of (a) out of Network transfers (b) Use of emergency measures due to regional bed shortage or (c) transfer of an existing ICU patient for the benefit of another. In the case of (c), note that transferring a patient from a place of safety against their own best interests is discouraged and technically unlawful. Should it be unavoidable, all reasons must be fully documented on a confidential Trust clinical incident form, including details of other patients involved.